



The
Cotswolds Village

PRICING AND FLOOR PLANS

The Cotswolds Village offers for sale, spacious serviced apartments and independent living units. Please join us for a cup of tea and have a look around, so that you are able to see "all that the Village has to offer".

Some of the advantages you will notice:

- A wonderfully caring environment, close to all services, set amongst six acres of established and well-maintained gardens.
- A choice of serviced studio or one bedroom apartments or one of our independent living one or two bedroom units, all with access to twenty-four hour registered nursing assistance.
- The opportunity to make new friends and participate in the range of activities on offer, if you wish to do so. The choice is yours.
- Excellent dining facilities with a private dining room available.

Some important considerations:

- No deferred management fee or exit fee.
- Any capital gain realised remains with you.
- Exceptional value accommodation with serviced apartments priced from \$175,000 (including all meals and weekly apartment cleaning) and the independent living units are priced from \$600,000.

We have included on the following pages a sample of the type and price of units and apartments currently available

PRICING AND FLOOR PLANS

UNIT TYPE- A	POSITION	ASKING PRICE	QUARTERLY MAINTENANCE
Unit 4	First Floor + garage	\$775,000	\$4,728.10
Unit 25	Ground Floor + garage	\$785,000	\$4,412.90
Unit 31	First Floor + garage	\$700,000	\$4,728.10
Unit 64	First Floor + carport	\$735,000	\$4,457.90
Unit 74	Ground Floor + garage	\$798,000	\$4,593.00

UNIT TYPE- B	POSITION	ASKING PRICE	QUARTERLY MAINTENANCE
Unit 38	Ground Floor + carport	\$715,000	\$4,142.70

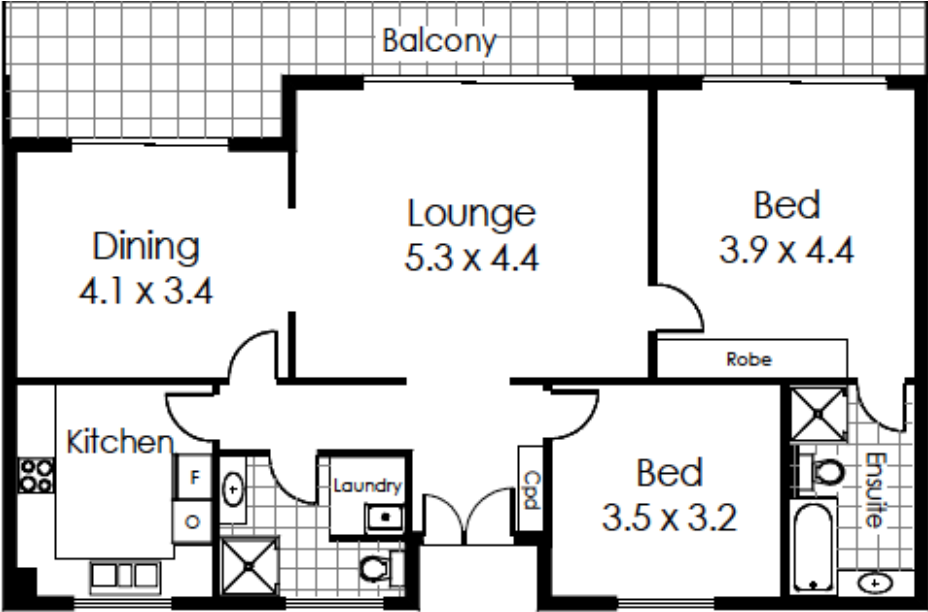
UNIT TYPE- C	POSITION	ASKING	QUARTERLY MAINTENANCE
Unit 67	Ground Floor + carport	\$630,000	\$3,107.00

SERVICED APARTMENT	POSITION	ASKING PRICE	* QUARTERLY MAINTENANCE
Apartment 4	Ground floor – Studio	\$180,000	\$5,307.30
Apartment 5	Ground floor – 1 bedroom serviced apartment	\$550,000	\$5,970.55
Apartments 14 & 15	Ground floor – Studio plus interconnecting studio apartment.	\$440,000 for double studio.	\$5,103.25 per apartment.
Apartment 21	First floor – Studio	\$180,000	\$5,307.30
Apartment 35	First floor – Studio	\$170,000	\$5,103.25

***The Serviced Apartment Maintenance Levy is inclusive of all meals and weekly apartment cleaning.**



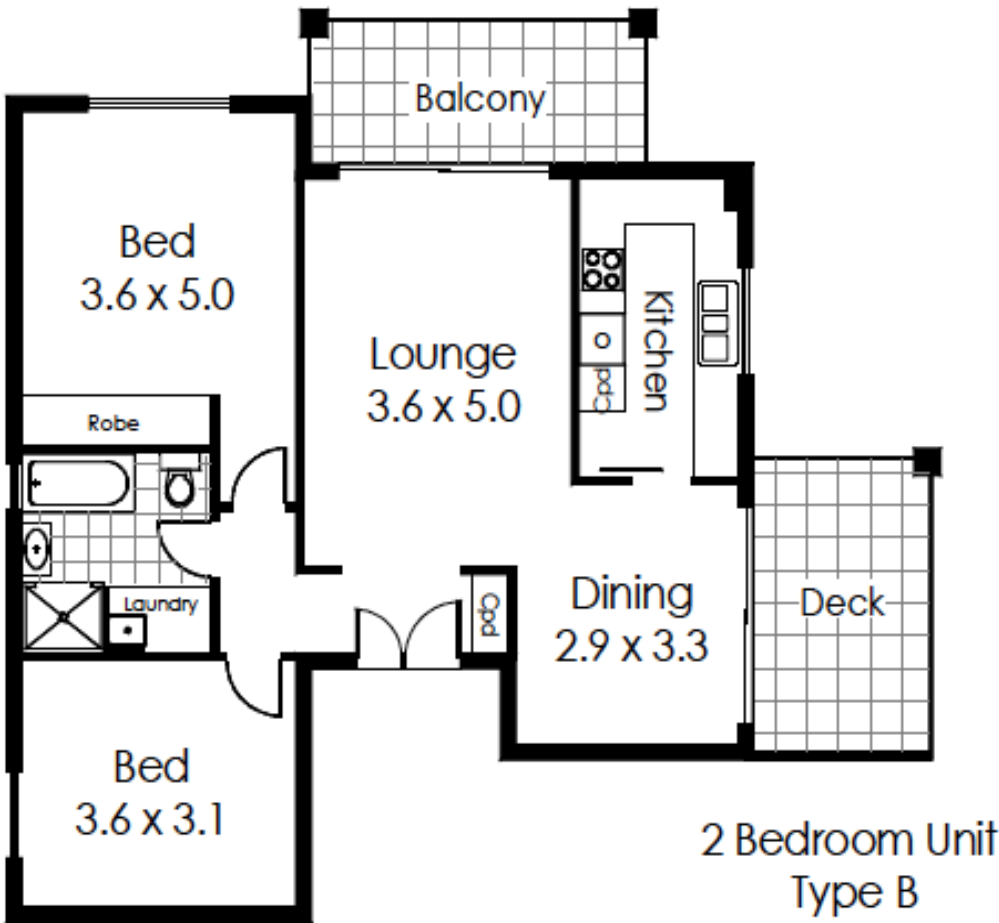
PRICING AND FLOOR PLANS



2 Bedroom Unit
Type A

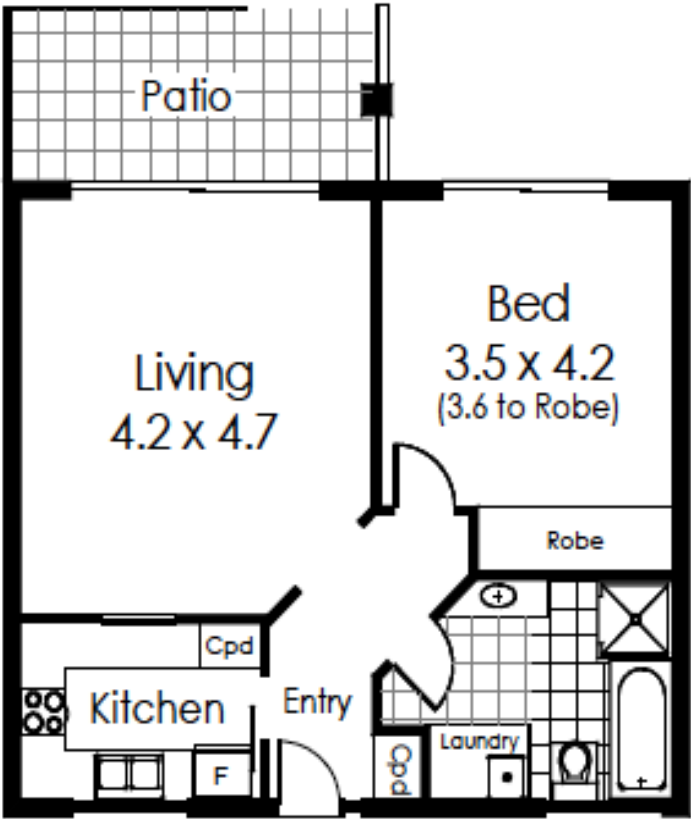


PRICING AND FLOOR PLANS





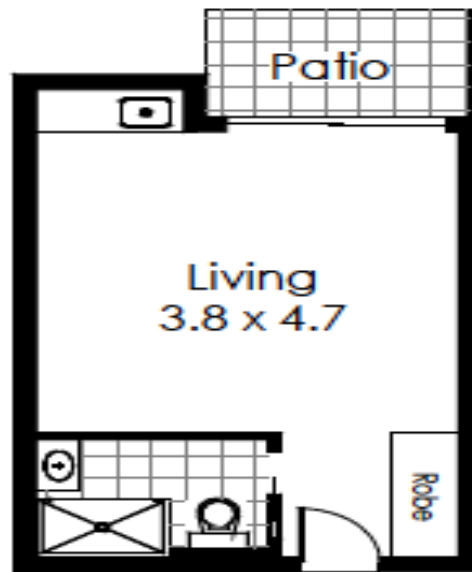
PRICING AND FLOOR PLANS



1 Bedroom Unit
Type C



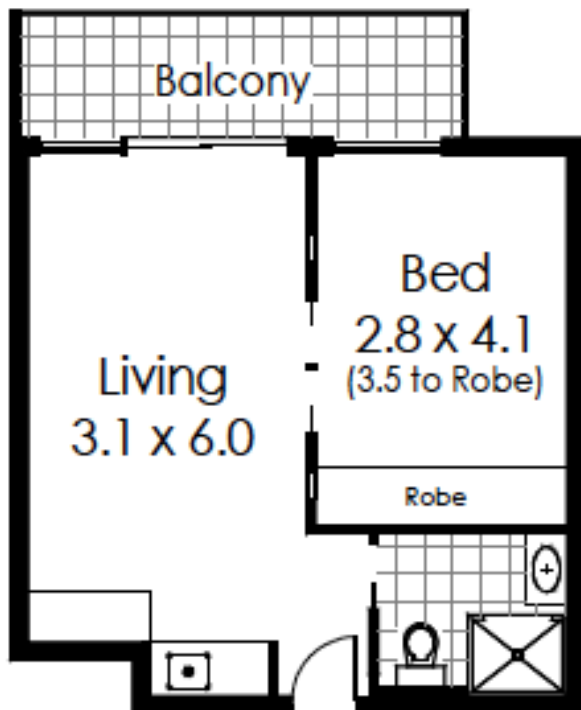
PRICING AND FLOOR PLANS



Studio Apartment
Type D



PRICING AND FLOOR PLANS



1 Bedroom Apartment
Type E