



The  
Cotswolds Village

## PRICING AND FLOOR PLANS

**The Cotswolds Village offers for sale, spacious serviced apartments and independent living units. Please join us for a cup of tea and have a look around, so that you are able to see "all that the Village has to offer".**

**Some of the advantages you will notice:**

- A wonderfully caring environment, close to all services, set amongst six acres of established and well-maintained gardens.
- A choice of serviced studio or one bedroom apartments or one of our independent living one or two bedroom units, all with access to twenty-four hour registered nursing assistance.
- The opportunity to make new friends and participate in the range of activities on offer, if you wish to do so. The choice is yours.
- Excellent dining facilities with a private dining room available.

**Some important considerations:**

- No deferred management fee or exit fee.
- Any capital gain realised remains with you.
- Exceptional value accommodation with serviced apartments priced from \$175,000 (including all meals and weekly apartment cleaning) and the independent living units are priced from \$600,000.

*We have included on the following pages a sample of the type and price of units and apartments currently available*



## PRICING AND FLOOR PLANS

UNIT TYPE- A	POSITION	ASKING PRICE	QUARTERLY MAINTENANCE
Unit 4	First Floor + garage	\$745,000	\$4,728.10
Unit 53	Ground Floor + garage	\$780,000	\$4,721.50
Unit 62	First Floor + carspace	\$785,000	\$4,629.85

UNIT TYPE- B	POSITION	ASKING PRICE	QUARTERLY MAINTENANCE
Unit 44	Ground Floor + garage	\$669,000	\$4,354.80

UNIT TYPE- C	POSITION	ASKING	QUARTERLY MAINTENANCE
Unit 60	Ground Floor + carport	\$580,000	\$2,979.60
Unit 67	Ground Floor + carport	\$630,000	\$3,107.00

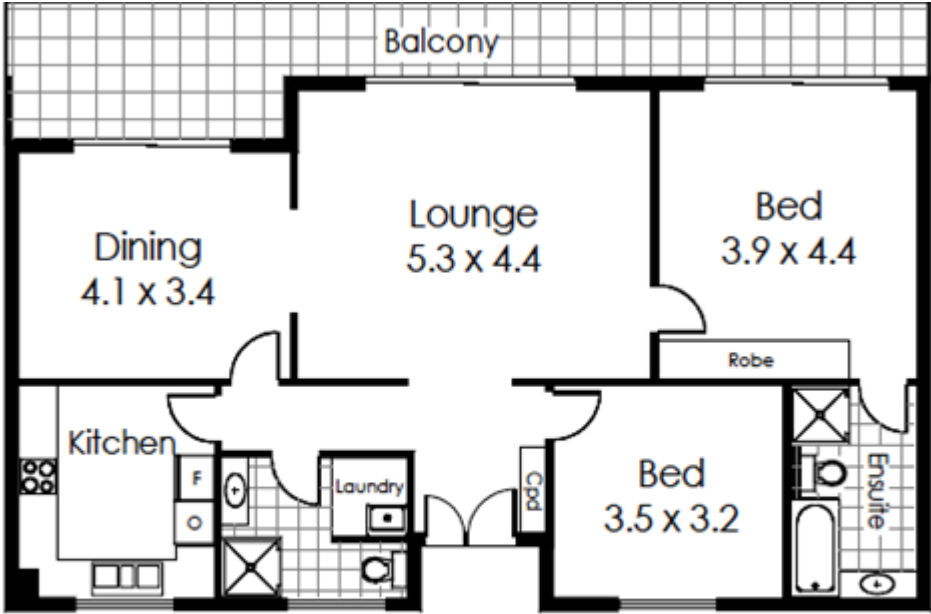
SERVICED APARTMENT	POSITION	ASKING PRICE	* QUARTERLY MAINTENANCE
Apartment 9	Ground floor - 1 Bedroom	\$535,000	\$6,026.05
Apartment 17	Ground Floor - Studio	\$165,000	\$4,987.29
Apartment 19	Ground floor – 1 Bedroom	\$495,000	\$5,819.29
Apartment 36	First Floor – 1 Bedroom	\$495,000	\$6,026.05

- The Serviced Apartment Maintenance Levy is inclusive of all meals and weekly apartment cleaning.





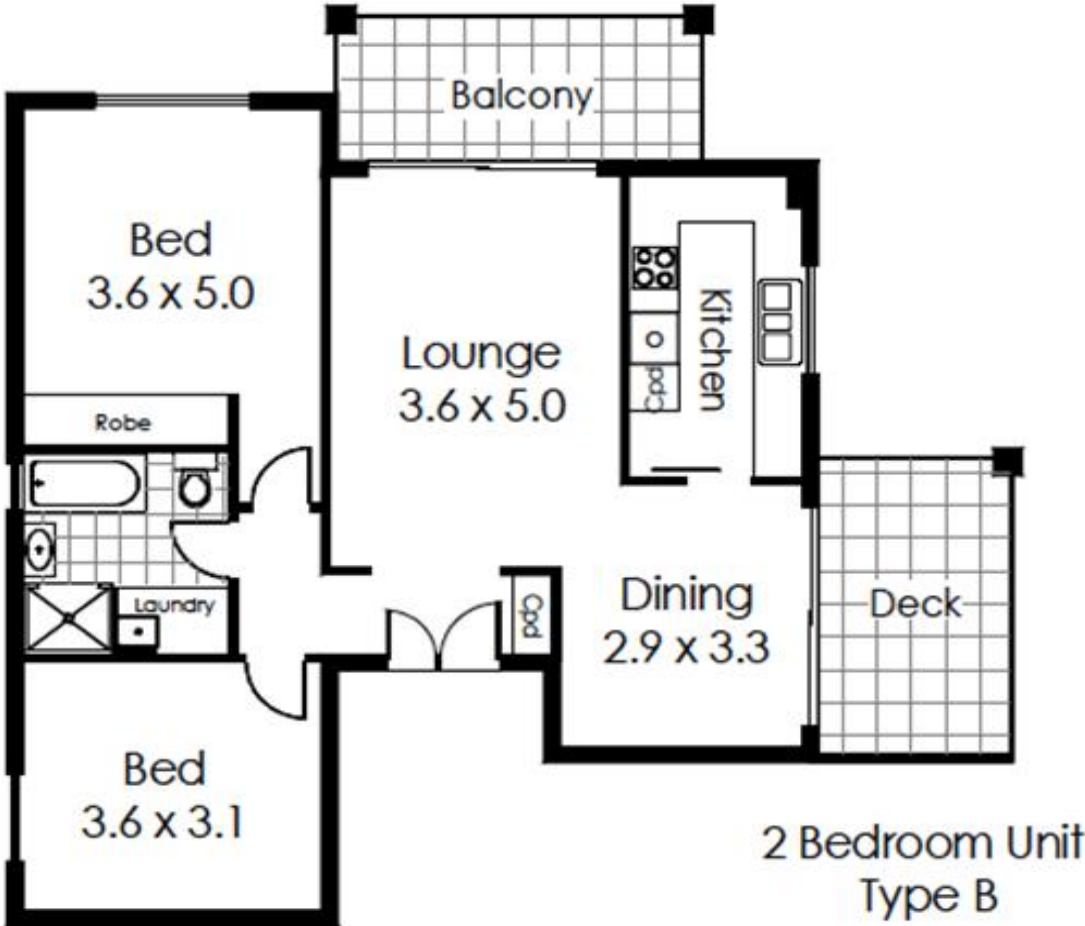
**PRICING AND FLOOR PLANS**



2 Bedroom Unit  
Type A



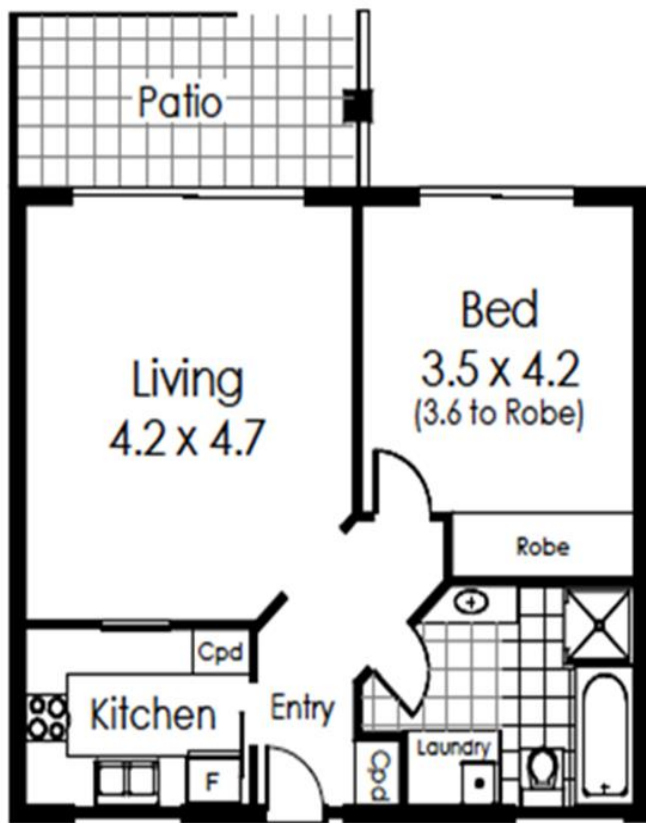
**PRICING AND FLOOR PLANS**







## PRICING AND FLOOR PLANS



1 Bedroom Unit  
Type C



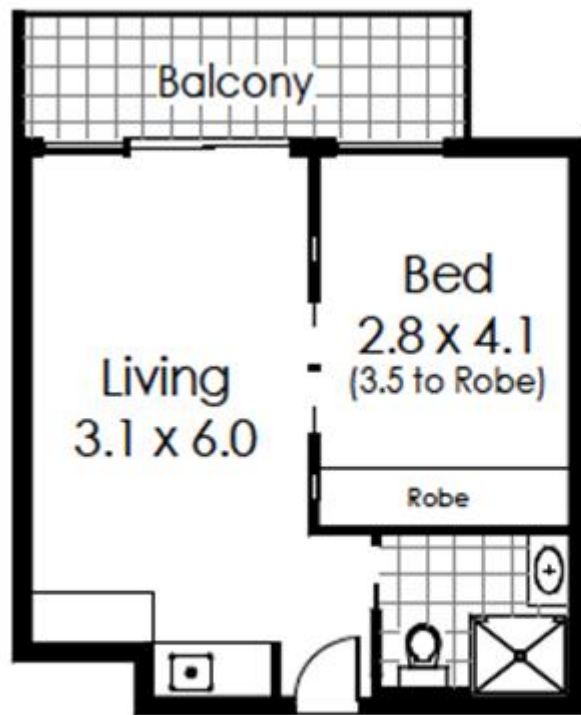
## PRICING AND FLOOR PLANS

### SERVICED APARTMENT FLOOR PLANS.

Quarterly levy is inclusive of all meals and weekly apartment cleaning



Studio Apartment  
Type D



1 Bedroom Apartment  
Type E





## PRICING AND FLOOR PLANS

**THIS PAGE HAS BEEN LEFT BLANK INTENTIONALLY**



## PRICING AND FLOOR PLANS

**THIS PAGE HAS BEEN LEFT BLANK INTENTIONALLY**





## PRICING AND FLOOR PLANS

THIS PAGE HAS BEEN LEFT BLANK INTENTIONALLY